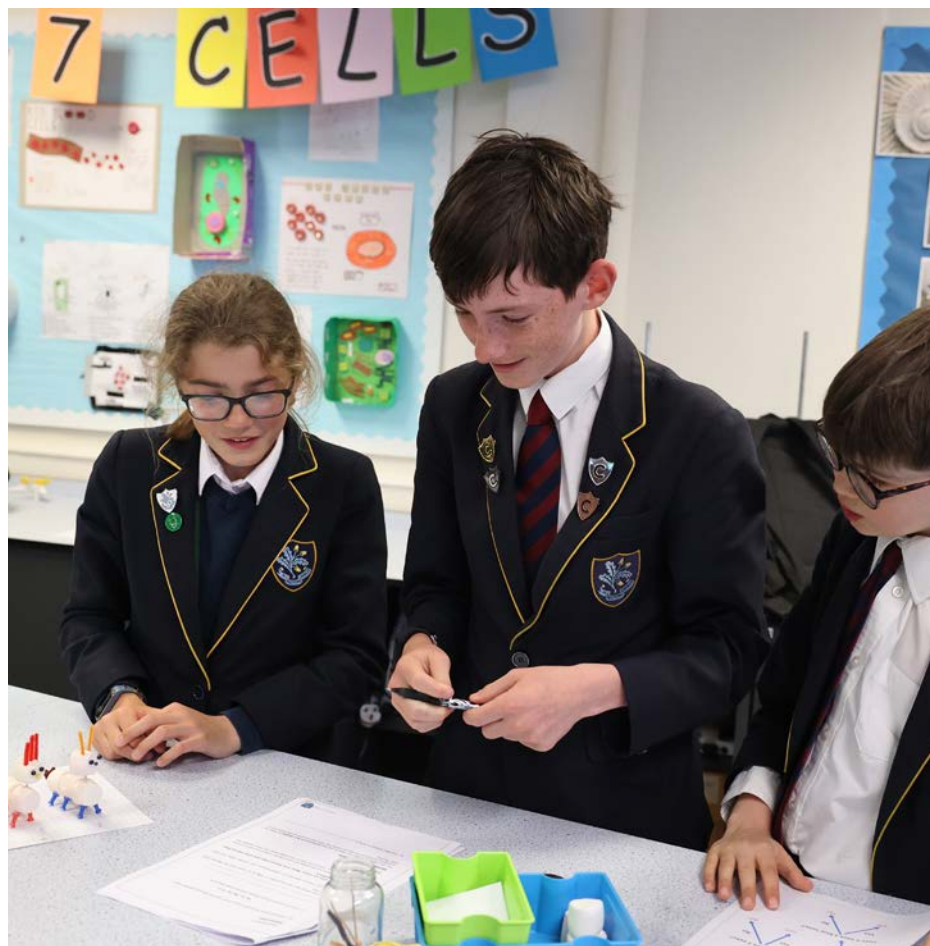




FOREST SCHOOL

11+ Guidelines
2026 Entry



Guidance for entry at 11+

Forest School offers approximately 120 places for boys and girls at age 11 in September each year. They will join our pupils from Forest Preparatory School to form eight classes in Year 7. Our aim is to have an equal split of boys and girls to create an inclusive, diverse and collaborative learning environment. Competition for places is high; 500 candidates applied for places in 2025.

Requirements for Entry in September 2026

Candidates should have reached the age of 11 before 1 September 2026. Applications must be received by midday on Wednesday 12 November 2025.

Parents are required to complete the online registration form via our website www.forest.org.uk and submit a non-returnable registration fee of £180 (overseas registrations are £240).



Selection Criteria

- **Entrance Assessment Test**
- **Interview**
- **Collaborative task**
- **Reference** - a written, confidential report from the candidate's current school.

Taster Mornings

We will hold our Taster mornings on Wednesday 25 February, Friday 27 February and Wednesday 4 March 2026 for candidates who have been offered a place at Forest School.



Familiarisation materials for the entrance assessments can be found on our website: <https://www.forest.org.uk/admissions-overview/11-entry/>

Siblings

Whilst we appreciate the desire to keep families together, parents should be aware that there is no guarantee or expectation that a sibling will be offered a place, if they do not meet the criteria for entry.

Parents of twins or other multiples applying for places together should also be aware that the outcome of each child's application may differ from the other(s).

Likewise, siblings applying at the same time for different entry points may receive different outcomes. However, if we have to decide between two or more candidates who meet our entrance criteria, we may give preference to twins (or other multiples), siblings or children with a particular skill, talent or aptitude.

Entrance Assessment Day

Pupils applying for a place at Forest will be invited to an assessment day on-site at Forest in December. This day will run for approximately four hours and will include:

An Entrance Assessment

The entrance assessment which will take the form of digital and written tests. We will provide a desktop computer for the applicant to access the digital test. They will also be supplied with scrap paper for working out and notes.

Part One (1 hour 10 minutes)

- Mathematics
- Non-Verbal reasoning
- Verbal reasoning
- English
- Puzzles and Problem-Solving

Mathematics (non-calculator - 20 minutes).

The maths test has two sections. The first section tests applicants' understanding of concepts from the National Curriculum, while the second section has more playful 'Maths Challenge Style' questions that test their ability to reason, problem solve with curriculum concepts, and adapt to unexpected situations.

Non-Verbal Reasoning (10 minutes).

Assesses the applicants' ability to identify patterns and think logically. This section will cover:

- Analysing visual information to problem solve.
- Identifying and continuing patterns.
- Visualising changes in 2D and 3D space.

Verbal Reasoning (10 minutes).

This section assesses applicants' ability to reason and solve problems with written information. This section will cover:

- Advanced vocabulary and use of language.
- Pattern spotting & making connections to identify rules.
- Thinking critically and using logic to make high-level deductions.

Maths, Non-Verbal Reasoning and Verbal Reasoning are *Adaptive*. This means the questions will get harder or easier as a prospective pupil moves through the assessment.



English (15 minutes). The test assesses applicants' comprehension of a non-fiction text. It aligns with the National Curriculum and focuses on skills such as retrieval, drawing inferences, and understanding the meaning of words in context.

Candidates should not be thrown by vocabulary they do not know as one of the things we are assessing is the ability to infer meaning from context.

Puzzles and Problem-Solving (15 minutes)

This section tests the applicants' ability to use words and numbers to solve multi-step problems. They will be provided with interactive resources to aid them during their problem-solving. The skills assessed include strategy, use of resources, trial and error and logical thinking.

Part Two (30 minutes)

A written, paper-based, assessment of written English (30 minutes).

There will be one question giving candidates the opportunity to write creatively, either in a short piece of fiction or non-fiction. Here, we are looking for original and accurate writing. Candidates who do well write in an imaginative and engaging manner.

An Interview

To ensure that our entry procedures are rigorous but remain inclusive and fair to all candidates, we will be interviewing ALL registered pupils on the assessment day.

This interview will allow us to conduct a more holistic assessment of the pupil and to understand whether Forest would be the appropriate setting for them to grow and thrive. The interview will focus on personal development and will be conducted by a senior member of Forest staff lasting no more than 20 minutes.

The English and Puzzles and Problem-Solving sections are *non-adaptive*, so the difficulty level of each question is not based on the candidate's previous response. It assesses aptitude and provides insight into learning behaviours. Candidates who are intrinsically motivated learners and have the resilience to persevere or consider a problem for a sustained period will likely perform well in this section.

A Collaborative Task

Students will take part in a collaborative group task. This will assess their ability to work with peers to explore a problem and consider possible solutions. The task will culminate in a presentation of ideas.



Familiarisation material for Part One and a sample paper for Part Two of the entrance assessment can be found on our website: <https://www.forest.org.uk/admissions-overview/11-entry/>

FAQS

What about candidates eligible for extra time?

Candidates eligible for extra time will be asked to indicate their entitlement at the point of application to Forest School. This additional time will automatically be added to the timer visible on their screen for each section of their assessment.

Why is the entry assessment going to be online? Will this not put candidates not used to typing at a disadvantage? What type of device will candidates use?

Many secondary schools are now running online assessments, which is becoming common practice. There is no extended typing exercise required so typing ability will not impact on results. Putting the assessment online significantly reduces the risk of human error, leading to results we can trust.

The entry assessment can be taken on many different types of devices including iPads, PCs, laptops, and chrome books. The device used will not make any difference to a candidate's performance. Forest will provide a desktop computer on the day to the candidates. Please ensure that your child is comfortable using a desktop computer, including familiarity with a mouse and keyboard.

My child is an overseas applicant. Where will they take the assessment?

Your child is welcome to travel to sit the assessment at our school. If you would prefer your child to sit the assessment overseas, please contact our Admissions team to find out how to proceed. Candidates who are living overseas may take the assessment under exam conditions at their current school or at a test centre.

How much preparation does my child have to do for the entry assessment?

Candidates should look at the familiarisation materials provided on our website. Beyond that, our assessments will test knowledge based on the National Curriculum (up to the end of Y5) and candidates will need to know how to read an extended comprehension passage to answer questions on it.

These are all skills that your child will be developing in school, so they will not need any special tuition or intensive practice. Instead, they are encouraged to read widely and engage in activities that inspire curiosity for the wider world.

What is the purpose of this style of assessment?

The style of assessment is designed to discourage excessive tutoring and instead find a way to measure children's genuine intellectual curiosity, passion, and enjoyment for learning.

The new assessment aims to go beyond testing cognitive ability by seeking to discover a child's potential in creative and critical thinking, analysis, synthesis and problem-solving. With this forward-thinking approach, we aim to create a fair and holistic assessment process that engages a wide range of learners and is more reflective of the values and education that Forest so cherishes.



Scholarships and Bursaries

Bursaries

Scholarships

Academic, Music, Sport, Drama and Art Scholarships are offered at 11+ entry. Academic Scholarships are awarded based on a combination of exceptional performance in the entrance assessments and a scholarship interview and, once awarded, are subject to annual review.

Academic, Music, Sport, Drama and Art Scholarships are not means tested and are awarded in percentage increments up to 20% of full fees.

20% of full fees is the maximum non-means-tested fee remission awarded in respect of any one pupil, whether in one area of excellence or in a combination of one or more areas of excellence.

Our non-means tested Scholarships will be subject to ongoing review.

Bursaries are means-tested and are awarded in conjunction with Scholarships, up to and including the total remission of fees; in other words, a free place. Bursary awards are conditional on a candidate first meeting the criteria for either an Academic, Music, Sport, Drama or Art Scholarship (or combination of these). In other words, Bursaries are only awarded in combination with a Scholarship fee remission (which as above are awarded in increments up to a maximum of 20%).

Parents are asked to refer to the income bands on the School website to determine eligibility for bursarial assistance.



Academic Scholarships

Following the Entrance Assessment Day, high-achieving applicants will then be invited back to Forest for scholarship interviews.





MUSIC

Music plays an essential part on creating the character of any young Forester. Our emphasis is on fostering creativity and providing award holders with the tools they need to succeed as developing musicians. Scholars lead from within as well as right from the front as ensemble members, orchestral players, choristers and soloists.

Music Scholarships at 11+ for 2026

The music department at Forest School is thriving, offering a broad and varied curriculum and access to specialist teachers of every instrument from violin to electric guitar, classical and modern vocals and a wealth of ensembles, choirs, orchestras and bands to participate in.

Many of our visiting teachers also teach at the junior and senior departments of the London conservatoires; some are also ABRSM examiners. All are committed professional musicians and many perform with some of the most well-known ensembles and orchestras in the country.

The opportunities at Forest allow pupils to explore music beyond the classroom, gain exposure to different styles and genres, and develop their own unique musical voice. Music Award Holders form the backbone of this provision. It is a wonderful environment to contribute and develop into the best musicians they can possibly be!

Entry - What we look for

Although we are looking for future potential and ongoing commitment, most pupils who receive 11+ Music Scholarships are of Grade 4-5 standard and beyond in their main instrument or voice, and show competence at technical skills, including sight-reading. They may offer a second instrument and will have a secure knowledge of music theory.

Although not an official requirement, all our Music Scholars tend to continue with Music as an academic subject until at least GCSE.

All recipients of a Music Award are expected to contribute fully to the musical life of the School, which will be monitored in an annual scholarship review meeting.

Applications

- Application can be made by ticking the appropriate box on the online registration form.
- Candidates will then be sent a link to an online music application form. They will need to upload a recording of ONE piece on their main instrument only, as well as certificates and copies of mark forms from their most recent practical examinations taken, and any competitions entered.
- A music report from each instrumental/vocal teacher should also be attached - this must include an assessment of the candidate's musical ability, experience and potential for the future.

Auditions

The **first round** will be assessed by submitting a recording of **one piece** on the candidate's main instrument. The piece must be played with a piano accompaniment if the score requires it. Backing tracks should only be used for pop/rock instruments. The panel will assess this recording together with all recent exam certificates and mark forms, as well as references provided by their music teacher.

Those who impress the Director of Music and the panel, will be invited for an individual **second round** audition on Tuesday 20 January or Thursday 22 January 2026.

Applicants will perform two pieces on their main instrument (which may be voice) and one piece on their second instrument (if offered).

They will also complete sight-reading and aural tests, and answer questions on music in general given by the interview panel.

Please ensure these two important dates are ring-fenced in your calendars.

Scholarships are awarded based on the online application form, any reports provided (including exam marks where relevant) and recorded submission and performance on the day.

Pre-audition advice

The Director of Music, is always delighted to meet with prospective scholars prior to audition in order to assist in preparation for these important events.

All candidates applying for a Music Scholarship must meet the academic standard for entry into the School. The entrance assessments will take place at Forest School on Thursday 11 and Friday 12 December 2025.

For further information please email the Music School Manager, Mrs Valentová:

Jana Valentová
jvalentova@forest.org.uk



ART

Art holds a special place at Forest and creativity is in the school's bones. The subject is taught by experts who have a deep understanding of Art pedagogy and practice.

Art Scholarships at 11+ for 2026

The department is thriving and the curriculum is both broad and varied with the discreet subjects of Fine Art, Photography and Textile Design being offered at GCSE and A-Level.

We also offer a range of super-curricular opportunities in the arts including clubs, artist visits, trips to museums and galleries both locally and abroad, and life drawing.

These factors all ensure that Art Scholars are provided with outstanding support enabling them to thrive as developing creative practitioners.

Entry – What we look for

Forest Art Scholars will show a natural propensity for art in one or a variety of mediums. They could be exceptional painters or photographers, be skilled potters or have a strong sense of fashion design and a love of textiles.

Regardless of their preferred artistic style we are looking for potential, talent and a dedication to the subject.

In the assessments the candidates will have the opportunity to explore and demonstrate their ability and their general understanding and appreciation for art.

Our Art Scholars will have access to many opportunities throughout their time at Forest to develop not only their art skills but their wider understanding of the genre and various disciplines.

Applications

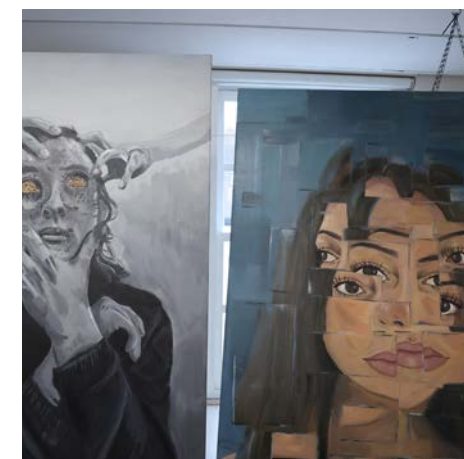
- Application for an Art Scholarship can be made by ticking the relevant box on the registration form.
- Candidates will then be sent a link to an online Art Scholarship application form, which will ask for detailed reasons why an Art Scholarship is right for your child.

Assessment

- First-round of assessments will take place on Wednesday 3 December 2025.
- Shortlisted candidates will be invited to an assessment on Monday 19 January 2026.

Please ensure these 2 important dates are ring-fenced in your calendars.

All candidates applying for an Art Scholarship must meet the academic standard for entry into the School. The entrance assessments will take place at Forest School on Thursday 11 and Friday 12 December 2025.



For further information please email the
Admissions Team (admissions@forest.org.uk).



DRAMA

Scholars who receive scholarships or exhibitions will serve as esteemed artistic ambassadors, representing the excellence of our Drama students and actively engaging in our co-curricular theatre program.

Drama Scholarships at 11+ for 2026 Applications

Drama lies at the heart of Forest School, evident through our thriving GCSE and A Level courses. As scholars, they will have the exceptional opportunity to participate in a diverse array of productions and performances, including whole school musicals, classical plays, short films, and even directing and producing their own plays. They may contribute as performers, directors, technicians, or stage managers, and may also take on responsibilities such as front-of-house staffing and backstage work.

Over the years, we have seen a steady stream of actors, technicians, and theatre makers from our school who have gone on to make significant contributions to the artistic community.

During their tenure at Forest School, scholars will partake in workshop-style clubs led by our expert Drama teachers, as well as recognised theatre practitioners, nurturing a profound appreciation for Theatre and honing their technical acting skills.

We also offer a range of theatre trips, both domestically and internationally, taking full advantage of our proximity to outstanding theatrical venues. This allows our students to witness an extremely diverse range of performance styles, broadening their horizons and enriching their theatrical experiences.

For further information for Drama, please email the **Admissions Team** (admissions@forest.org.uk).

Applications

- Application can be made by ticking the appropriate box on the online registration form.
- Candidates will then be sent a link to an online drama application form, to explain their experience and/or passion for drama and theatre.

Assessment

- First-round of auditions will take place on Friday 5 December 2025.
- Shortlisted candidates will be invited to auditions on Monday 19 January 2026.

Please ensure these 2 important dates are ring-fenced in your calendars.

All candidates applying for a Drama Scholarship must meet the academic standard for entry into the School. The entrance assessments will take place at Forest School on Thursday 11 and Friday 12 December 2025.



SPORT

Forest School has a long-standing tradition for excellence when it comes to sport.

Sport Scholarships at 11+ for 2026

Entry - What we look for

Successful candidates must be able to demonstrate significant potential to perform at a high level and, ideally, each candidate must excel in one of the major School sports (football, hockey, netball, cricket, swimming and athletics).

As a guide, candidates will usually be performing at regional, county or district level or equivalent, however, we understand that some candidates may not have had this opportunity at this age.

Applications

Application for a Sport Scholarship can be made by ticking the relevant box on the registration form.

Candidates will then be sent a link to the online sport application form, which will ask for detailed sporting achievements.



Assessment

- Candidates will choose to be assessed in two of the School's major sports and will also take part in other sporting activities in order to assess athletic potential.
- Candidates online sport scholarship application form with details of sporting ability and involvement.
- Assessment will take place on Thursday 4 December 2025.
- Shortlisted assessments will be held on 23 January 2026.

Please ensure these 2 important dates are ring-fenced in your calendars.

All candidates applying for a Sport Scholarship must meet the academic standard for entry into the School. The entrance assessments will take place at Forest School on Thursday 11 and Friday 12 December 2025.

Scholarships are awarded based on performance in this entrance assessment plus the online application combined with performance on the day.

All recipients of a Sport Scholarship are expected to contribute fully to the sporting life of the School in all three terms of the academic year, which will be monitored in an annual scholarship review meeting.

For further information please contact the **Admissions Team**, (admissions@forest.org.uk).





Key Dates for 11+ Entry September 2026

Open Morning
Saturday 20 September 2025

Senior School Summer Tours
June 2025

The Forest Experience Group Tours
October - December 2025

11+ Information Morning
Saturday 11 October 2025

11+ Information Morning
Saturday 8 November 2025

Closing Date for Registrations
(Midday) Wednesday 12 November 2025

**11+ Non-Academic
Scholarship Deadline**
(Midday) Friday 21 November 2025

11+ Art Scholarship Assessment
Wednesday 3 December 2025

11+ Sport Scholarship Assessments
Thursday 4 December 2025

11+ Drama Scholarship Assessment
Friday 5 December 2025

**11+ Receipt of School
Reference Deadline**
(Midday) Friday 28 November 2025

**11+ Bursary Application
Form Deadline**
(Midday) Friday 12 December 2025

11+ Entrance Assessment Day
Thursday 11 & Friday 12 December 2025

11+ Academic Scholarship Interviews
w/c Monday 12 January 2026

11+ Shortlisted Art Assessment
Monday 19 January 2026

11+ Shortlisted Drama Auditions
Monday 19 January 2026

11+ Shortlisted Music Auditions
Tuesday 20 & Thursday 22 January 2026

11+ Shortlisted Sports Assessments
Friday 23 January 2026

Offers Emailed
Thursday 12 February 2026

**Taster Mornings
for candidates holding offers**
Wednesday 25 February,
Friday 27 February & Wednesday 4 March

Q&A for Parents of offer holders
Wednesday 25 February,
Friday 27 February & Wednesday 4 March

**Tours
offered to candidates holding offers**
Wednesday 25 February -
Wednesday 4 March

Deadline for Acceptance of Offer
10am on Friday 6 March 2026



FOREST SCHOOL

London E17 3PY

020 8520 1744

| admissions@forest.org.uk

| www.forest.org.uk